

P2P IP Camera
New Vision, New Life

SOLAR NETWORK CAMERA

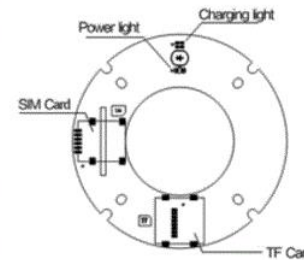
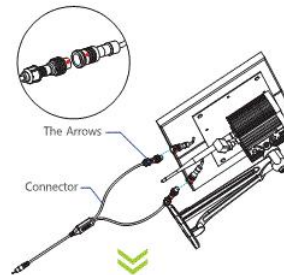
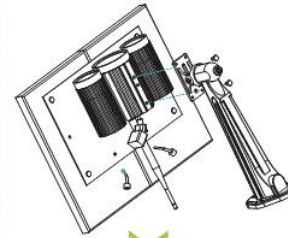
New Battery design, Low Energy Consumption

Installation

- > Please read this manual completely
- > Do not open the camera, only authorized dealers are allowed to do this
- > Charge the battery 8 hours before installation
- > Install the camera in outdoor environment with clear sight to sunshine
- > Do not support SIM card hot-plugging in and hot swap when charging.

Note: Installation with* is special for 4G Version

HW0029



01 INSTALLATION INSTRUCTIONS

Set up the fixed bracket: Please take out the camera and the bracket from the color box, and get the hexagon bolt from the bag of accessories, use a spanner to fix the bracket on the camera with the hexagon bolt exactly.

Combining the Solar Power Panel with the camera: Combine the cable of the power output of Solar Power Panel with the cable of power input of the camera,

⚠ Attention: The arrow of the solar power panel power output should be in right direction with the arrow of the camera power input.

Indicator light:

- 1) When the indicator light blinking red, the storage of battery is about 30%
- 2) When the indicator light blinking green and red, the storage of battery is about 50%.
- 3) When the indicator light blinking green, the storage of battery is 80%.
- 4) When the indicator light is always green, the storage of battery is 100%.

Turning on: When the camera is being charged by solar power panel or power adapter, the indicator light turns blue, the camera starts working, it takes 30 seconds to turn on the camera.

Turning off: While the camera is working, keep the power adapter in power jack and plug the power adapter pin in camera in and out for 3 times to turn off the camera, the indicator light turns off at the same time (Please repeat again if the indicator light not turn off)

⚠ Please charge the camera with the power adaptor for more than 8 hours before using the camera.

02 CONNECTION

APP Download



Please Download and install the APP before you set up the IP Camera. Search on Google Play store or APP Store for "CamHi"

Three Connection Methods

AP Connection (Peer to Peer via WIFI)

- > It will give out a Wifi AP signal when the camera is connected with power(Battery or DC)
Note: If network cable is connected, access point (AP) is not available
- > Search and connect directly to the camera WIFI AP (Such as CAM0001) using your mobile or notebook, the default WIFI password : 123456789;
- > Then search the camera through APP or Search Tool (Search option).

Wired Network Connection

- > Connect the camera to your router after being fully charged
- > Then Search the camera though APP, Search Tool(Search option)

★ 4G Connection

- > Scan the QR code on the camera with APP or Input the P2P ID directly on PC Client to access the video;
- > Search the camera WIFI-SSID: Solar Cam-4GXX,Password:123456789 Please change and remember the new password when firstly use Sign in and search the camera locally, the same installation as the 3-rd version
Note: when searched and found, this camera type, the ID start with digits ZZZZ Then connect to the camera



APP Installation

- A.For Apple devices ,please download "CamHi" in APP Store and install it;
- B.For Android devices, please download "CamHi" in Google Play and install it

Add devices on IPC View

Run the " CamHi " ,3 methods to add the cameras as below:



02

CONNECTION

03

MOBILE ACCESS

03

MOBILE ACCESS

Method 1

Input the P2P ID, User name, Password of your camera manually. Then click "Save".

Method 2

Scan the QR code:Click the "Scan QR code" button, at the bottom of the camera, there is a label of QR Code, then scan the QR code with your smart phone ,it will show the ID, input the user name and password, then click'Save".

Method 3

Click "Search" , then you will get the local camera list in your phone. Choose the camera which you want to view, input the user name and pass word, then click "Save" .

Note: The default account and password are admin. If changed, please input the new one.

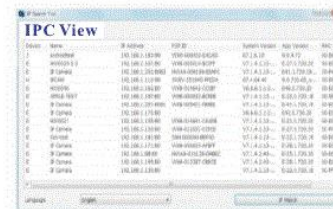


CamHi operation interface



Operation of computer LAN

- > Open or start the Search Tool application
- > The local camera IP address of the camera will be showed on the Search Tool



Note

- > Device: camera software standard
- > Name: camera device name
- > IP Address: camera local IP address
- > P2P ID:It can be used for APP locally and remotely connection
- > IP Match:It will work when the Search Tool showed subnet not matched
- Double click the IP address in the Search Tool, but make sure your browser is Internet Explorer 11,Chrome or Firefox and sign into the camera via login interface,both account and password are admin

04

LOGON SETTINGS



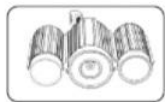
Note

- > Factory default User Name and Password both " admin" .
(Please change the default password after login and remember new password.)
- > The login interface will be showed after inputting the password
(One device Max support 6 users access at the same time)
- > After installing the plugin,sign in the camera on IE 11, Chrome or Firefox

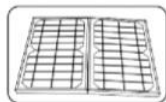
Login Interface



Camera User Interface



Camera



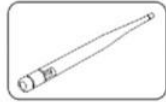
Solar Panel



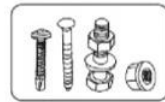
User Manual



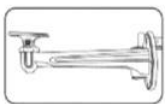
Connector



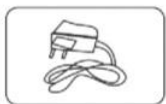
Antenna



Screws



Bracket



Adapter

Note: The package includes 16G TF Card, which has been installed in the camera body

04

LOGON SETTINGS

06

COMMON QUESTIONS

Q : APP cannot setting wifi for camera

- A: > Please use IE browser setting wifi,
> You can make the camera and your computer in the same LAN
> Use search tool login webpage and setting wifi.

Q:No AP signal(Unavailable for 4G version)?

- A: > Please check if the camera connected with network Cable, if so, disconnect network cable
> Please check if the camera connected with router wifi, if so, reset the camera
> Please press the Reset button 10s to restore the camera to factory settings

Q:The 4G function cannot be connected or not stable?

- A: > Please check if 3G/4G signal normal;
> Please adjust the 4G signal through its antenna:
After connected with Wifi-SSID:Solar Cam-4GXX,input the IP 192.168.1.1 in the browser to check and adjust the signal
Note: The Wifi SSID max support 10 users

Q:Camera working durationg is too short?

- A: > Please check if the solar panel connested correct with the connector line
> Please check if its best environment to install the solar panel to get the best sunshine
> Please check if the solar panel and the bracket have been installed as 45 degree
> Please check if the 4G signal is stronger;if do,the consumption is lower,the camera duration is longer

Q:After connected to the Wifi-SSID "Solar Cam-4GXX",the mobile phone can connect to Internet, but the camera shows offline.

- A: > Click on the gear symbol (bottom right) within configuration choose "Wireless"
> Click "search" ,choose your router via the SSID,
> Input the wireless password accordingly
> Click "check" ,About 30s, will pop-up window and inform if wifi setting is successful.
> If successful, then click "Apply" , plug out the cable, and check the IP address on the Search Tool

Note: Please repeat the settings again if no IP address on the Search Tool



05

PACKING LIST